

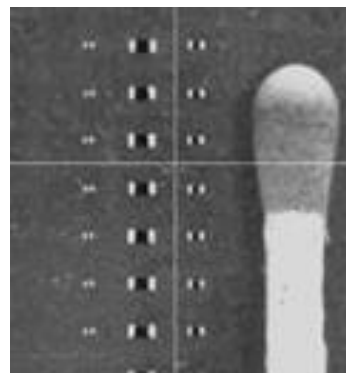
MX70 Pick and Place System with Vision

Mechatronika's **MX70 Pick and Place** System is a versatile automatic machine for placing SMD components from 0201 to 35 x 35 mm with a full vision, touchless component centering.

Matured, high quality rigid construction, ease of programming and excellent price to performance ratio make MX70 perfectly suited for small and middle scale production lines.

MX70 combines mechanical accuracy with high quality pattern recognition system built into easy to use and powerful programming software. MX70 productivity and flexibility, quick change-over and low maintenance requirements drive down total cost of ownership (TCO) to the level demanded by today's cost-sensitive production environments.

The very unique feature of **MX70** is its ability to pickup bulk (loose) components from container-type feeders. MX70 built-in intelligent vision system enables to locate required component, pick it up, determine its position on the nozzle head and precisely place it on preprogrammed position. **MX70** accepts any number of bulk component feeders that can fit within its working space



Vision Centering

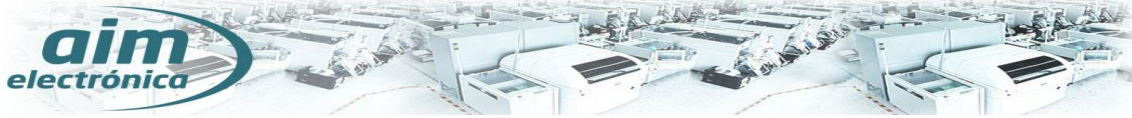
Fully automated placing

Automatic fiducials correction and bad mark sensing

Automatic change of nozzles

Pick & Place data can be entered manually in TEACH-IN mode or can be converted from various CAD data systems

good price to performance ratio



PCB

Placement area 330 x 500 mm

Feeders

60 feeders for 8 mm tapes + 30 sticks of SO8 – SO16

Components

Range from 0201 to 35 x 35 mm

Pitch up to 0.5 mm

Tape feeders

Tapes 8 mm, 12 mm, 16 mm, 24 mm, 32 mm, 44 mm

Sticks SO8–PLCC84

Trays

Bulk / loose components

Placement rate

2400 - 2800 cph

Placement accuracy

Better than 0.08 mm

Nozzle changer

Automatic, 8 nozzles

Automatic sensing of nozzle presence

XY resolution

5 µm, (linear encoders as standard)

Vision system

Automatic fiducial correction

Automatic bad mark sensing

Touchless component centering

Angle resolution

0,05°

Control Panel

LCD 17’’ screen

Keyboard

Mouse

Options

Data import from CAD

Tape strips feeder

Dimensions and weight

900 x 1250 x 1230 mm,

250 kg

Power Supply

230 V, 50 Hz, 400 W

Compressed Air Supply

0,6 MPa, 20 l/min